



RESUME

Marco Antonio Martínez Mora



Profession : Mechanical Engineer gas and Diesel specialist on heavy equipment

At the age 18 I started my professional carrier as entrepenuer and General contractor of Services. Several of them: HULLERA MEXICANA subsidiary of Fundidora de Fierro y Acero en Monterrey Nuevo Leon and MIMOSA Minerales

Monclova subsidiary of AHMSA and also services to PEMEX.

Comisión Federal de Electricidad C.T. Carbón II Nava, COAH.

Cemex Concretos

Refractarios Básicos Monclova

Minera Penmont Servicios Industriales Peñoles



Own Projects : Coal Mine Project, Iron Project, Copper Project, Fluorspar Project, Manganese Project.



In 2016 we entered into a joint venture with Mexus Gold Mining S.A. de C.V. to develop several precious metal projects. Presently, we are preparing facilities to begin production of the Santa Elena Project

CURRICULUM BUSINESS GROUP

Company born as a response to the requirements and needs of the Mining and Metallurgical Regional, National and International industry.



CURRICULUM BUSINESS GROUP

2001

COMISION FEDERAL
DE ELECT. C.T.

STRIPPING IN OPEN PIT MINE,
DRILLING , LOAD AND CARRY ESTERIL
FOR COAL EXTRACTION AND SUPPLY.

2002

CARBON II
NAVA, COAH.

2003

CEMEX CONCRETOS
MONTERREY, N.L.
MERIDA YUC

LIMESTONE CRUSHING.
AGGREGATE PRODUCTION IN
GENERAL.

2004

REFRACTARIOS BASICOS
MONCLOVA, COAH.

STRIPPING IN OPEN PIT MINE,
DRILLING , LOAD AND CARRY,
LIMESTONE CRUSHING, AGGREGATE
PRODUCTION IN GENERAL.

2005

VARIOS TAMAULIPAS -
MEXICO

SELECTION, LOADS, HAULING AND
LIMESTONE CRUSHING, PRODUCTION
OF AGREGATES AND SEALS IN
GENERAL, REGULATIONS SCT.

2005

MINERA PENMONT, S DE
RL Y/O SERVICIOS
INDUSTRIALES PEÑALES

CRUSHING AND SIFTING MATERIAL
FOR FILTER PRODUCTION FOR MINE
LEACH PAD LA HERRADURA EJIDO
JUAN ALVAREZ, Caborca, Sonora
(200,000 tons).

2006

MINERA PENMONT, S DE
RL Y/O SERVICIOS
INDUSTRIALES PEÑALES

CRUSHING AND SIFTING MATERIAL
FOR FILTER PRODUCTION FOR MINE
LEACH PAD LA HERRADURA EJIDO
JUAN ALVAREZ, Caborca, Sonora
(200,000 tons).



CONE CRUSHING UNIT OF 1500TONS FOR SHIFT
IN LA HERRADURA



VIBRATING SCREEN 6 'X 16' AND
CONVEYOR BELT IN LA HERRADURA



2006

2007

2008

MINERA PENMONT, S DE
RL Y/O SERVICIOS
INDUSTRIALES PEÑÓLES

LOADING AND HAULING OF MINERAL
AND TEPETATE (2,000,000 TONS) TO
LEACHING PADS AND DUMPING IN
MILPILLAS, CANANEA, SONORA.



5TH WHEEL TRACTOR FLEET VOLKSWAGEN
MCA USED IN MILPILLAS



ARTICULATED TRUCK TEREX DROPPING
MINERAL IN MILPILLAS



TRACTOR D8 FALLING BEHIND MINERAL IN
MILPILLAS



ARTICULATED TRUCK TEREX DROPPING
MINERAL IN MILPILLAS

2007
2008

MINERA PENMONT, S DE
RL Y/O SERVICIOS
INDUSTRIALES PEÑALES

DRILLING, UNUSED MATERIAL,
LOADING AND HAULING MINERAL AND
TEPETATE TO LEACHING PADS AND
LAND IN LA HERRADURA MINE EJIDO
JUAN ALVAREZ, CABORCA, SON.
SERVICE WORKSHOP BUILDING
SURFACE 450m2.



PANTERA DM45



UNUSED MATERIAL
AND LOADING



HAULING



TRUCKS FLEET

2007
2008

MINERA PENMONT, S DE
RL Y/O SERVICIOS
INDUSTRIALES PEÑALES

DRILLING, UNUSED MATERIAL,
LOADING AND HAULING MINERAL AND
TEPETATE TO LEACHING PADS AND
LANDS IN LA HERRADURA MINE EJIDO
JUAN ALVAREZ, CABORCA, SON.
SERVICE WORKSHOP BUILDING
SURFACE 450m2.



MAINTENANCE WORKSHOP TO MACHINERY IN LA HERRADURA



WAREHOUSE OILS



WAREHOUSE OF
OXYGEN



SPARE PARTS
WAREHOUSE

2009

COAL MINE PROJECT

OPEN PIT STRIPPING AT LA LUZ II MINE, DRILLING, BLOWN OUT, LOADING AND HAULING STERILE FOR COAL EXTRACTION IN THE MUNICIPALITY OF BASOLO, COAH. (100,000 ANNUAL TONS)



2009
2010

MINERA PENMONT, S DE
RL Y/O SERVICIOS
INDUSTRIALES PEÑALES

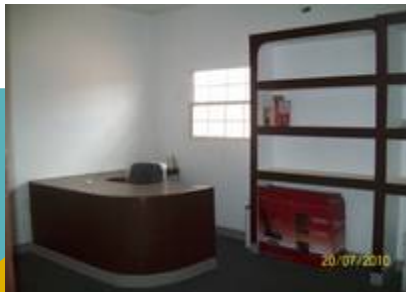
DRILLING, UNUSED MATERIAL,
LOADING AND HAULING MINERAL AND
TEPETATE TO LEACHING PADS AND
LANDS OF LA HERRADURA MINE
EJIDO JUAN ALVAREZ, CABORCA, SON.
300m² OFFICES BUILDING INSIDE THE
MINE.



UNUSED MATERIAL AND CARRY
LOADS



OFFICES BUILDING INSIDE THE MINE.



INTERIOR OFFICES



INTERIOR OFFICES



COMMUNICATION SYSTEM

2011
2012

RAW MATERIALS GROUP

DRILLING, UNUSED MATERIAL,
LOADING AND HAULING OF RAW
MATERIAL AND DESENCAPE IN
LANDS AT SAN JOSE MINE
AHUAZOTEPEC GUANAJUATO IN
PUEBLA.



TEMPLATE FOR BLASTING



UNUSED MATERIAL LOAD AND
HAULING



LOAD AND HAULING IN SAN
JOSÉ



BUILDING BOARD IN
AHUAZOTEPEC



LOAD AND HAULING IN AHUAZOTEPEC

2013
2014

OWN PROJECTS

THROUGH OUR COMPANY SUBSIDIARY **MARMAR HOLDING SA DE CV** HAVE FOCUSED OUR MAIN BUSINESS IN ASSESSING MINING PROJECTS WHICH ARE LOCATED IN THE FOLLOWING AREAS OR CITIES

TITLE	AREA
Phonix	Caborca Sonora
Marco	Caborca Sonora
Marina	Trincheras, Sonora
Marco Fracc I	Onavas, Sonora
Marco Fracc II	Onavas, Sonora
Phonix 3	Caborca Sonora
Marco	Caborca Sonora
Marco	Puerto peñasco sonora
San Carlos	Caborca Sonora
Phonix 4	Caborca Sonora
CAMOU	Trincheras, Sonora
AFRICA	Trincheras, Sonora
Badui	Puerto peñasco sonora
LA ILUMINADA	Caborca Son
LA TILICHI	Caborca Son
DANIEL LEE	Caborca Son
EL CHUN	Caborca Son
EL CHUN	Caborca Son
El Éxito	la paz
Marco	La paz
El Éxito	la paz
San Marcos fracc I	la paz
San Marcos fracc II	la paz
Trinidad 3	Los Cabos
LA GALLINA	Jalisco
LOS TRES COMPADRES	Jalisco

Vallecitos Facc I	La Paz Baja California
Vallecitos Facc II	La Paz Baja California

2014 IRON PROJECT

THROUGH OUR AFFILIATE COMPANY
MARMAR HOLDING SA DE CV HAS THE IRON
AND COPPER PROJECT IN JALISCO STATE.



2015

COBRE DEL MAYO PROJECT

THROUGH OUR COMPANY SUBSIDIARY
MARMAR HOLDING SA DE CV CRUSHING
COPPER MINERAL PROJECT, WITH CAPACITY
OF 7,000 TONS DAILY IN COBRE DEL MAYO
MINE IN THE MUNICIPALITY OF ALAMOS,
SONORA



IT OFFERS ALL HIS EXPERIENCE AS WELL AS MACHINERY AND EQUIPMENT AND THIS IS IN NORTHERN STATES ARE AS MEXICO COAHUILA, NUEVO LEON, TAMAULIPAS AND SONORA. FULLY AVAILABLE TO THE COMPANY MENTIONED, SUCH MACHINERY AND EQUIPMENT DETAILED BELOW:

2 TRUCK FLEET TEREX AND OFF ROAD KOMATSU 100 TONS OF EACH FLEET 5 UNITS
2 CATERPILLAR 345BL EXCAVATOR
1 CATERPILLAR 330BL EXCAVATOR
5 TRUCKS DUMP TORTON 14M3 C / U
2 DUMPERS 30 TONS
2 TRACTORS VOLVO MODEL 2008
1 TRACTOR D10R MCA. CATERPILLAR
1 TRACTOR D10N MCA. CATERPILLAR
1 TRACTOR D8N MCA. CATERPILLAR
1 CRANE 50 TONS OMEGA,
1 CRANE PH 100 TONS
DRILL INGERSOLL-RAND IR 2001 DMLSP. 6 3/4 12 "DIAM. AND TOWER BAR 17 MTS 1200 CFM COMPRESSOR
350 PSI
DRILL TEC 40 8 "DIAM AND 10 MTS TO DRILL COMPRESSOR 900 CFM AND 350 PSI
1 PAYLOADER CAT 988
1 CAT 988B -PAYLOADER
2 CAT 992C -PAYLOADER
2 PAYLOADER CAT 992G
2 DIFFERENT CAPABILITIES LOWBOY
PLANT CAPACITY WITH MERRILL CROWE Oz 5000 / MONTH.
1 CRACKER MARK STONE OmniCore NORDBERG 1560,
1 BREAKER JAWS 30 " X 42 'CEC-MINYU MARK WITH FEEDER
VIBRATORY 43 " X 16 " WITH SHOCK AND MOUNTED CARRIER
IN THREE AXLE CHASSIS
1 SCREEN PIONEER BRAND MODEL AND SCREEN 6X20 8x20

2015

FLUORSPAR PROJECT

THROUGH OUR AFFILIATE COMPANY
MARMAR HOLDING SA DE CV WITH TRADE
PARTNERSHIP HAS THE FLUORSPAR
PROJECT IN COAHUILA STATE.



2016

GOLD PROJECT SANTA ELENA

In 2016 we entered into a joint venture with Mexus Gold Mining S.A. de C.V. to develop several precious metal projects. Presently, we are preparing facilities to begin production of the Santa Elena Project.



2016

MANGANESE PROJECT

THROUGH OUR AFFILIATE COMPANY
MARMAR HOLDING SA DE CV WITH TRADE
PARTNERSHIP HAS
THE PROJECT FOR MANGANESE COAHUILA
STATE.



DRILL INGERSOLL-RAND 2001 IR DMLSP. DE 6 3/4 A 12" DIAM. Y TOWER BAR 17 MTS
COMPRESSOR 1200 CFM 350 PSI



PLANT MERRILL CROWE WITH THE CAPACITY OF 5000 Oz/mes



Controller- 25' long, 8' deep and approx. 10" high



Water Filters – set on a skid. The skid is 22' long and 3' wide



Filter Presses. Two each. Each press is 19' long and 5' wide



Precipitation Tank. 25' long, 5' diameter. The tank sets on 8"x8" posts

PLANT MERRILL CROWE CON THE CAPACITY OF 5000 Oz/mes (EXTRA PARTS)



Miscellaneous filters and carts





CONTACT

Ing. Marco Antonio Martínez Mora.

E-mail: mtzmora1@gmail.com (81)20401804

C.P. Regino Javier Vargas Elizondo.

E-mail: rvargas44@hotmail.com (866)1070294

BLVD. HAROLD R. PAPE 1353 A COL. BENAVIDES
MONCLOVA, COAHUILA CP. 25760